

SECTION 35, T.7N.,R2W., S.L.B.&M.

TAXING UNIT: 145, 268

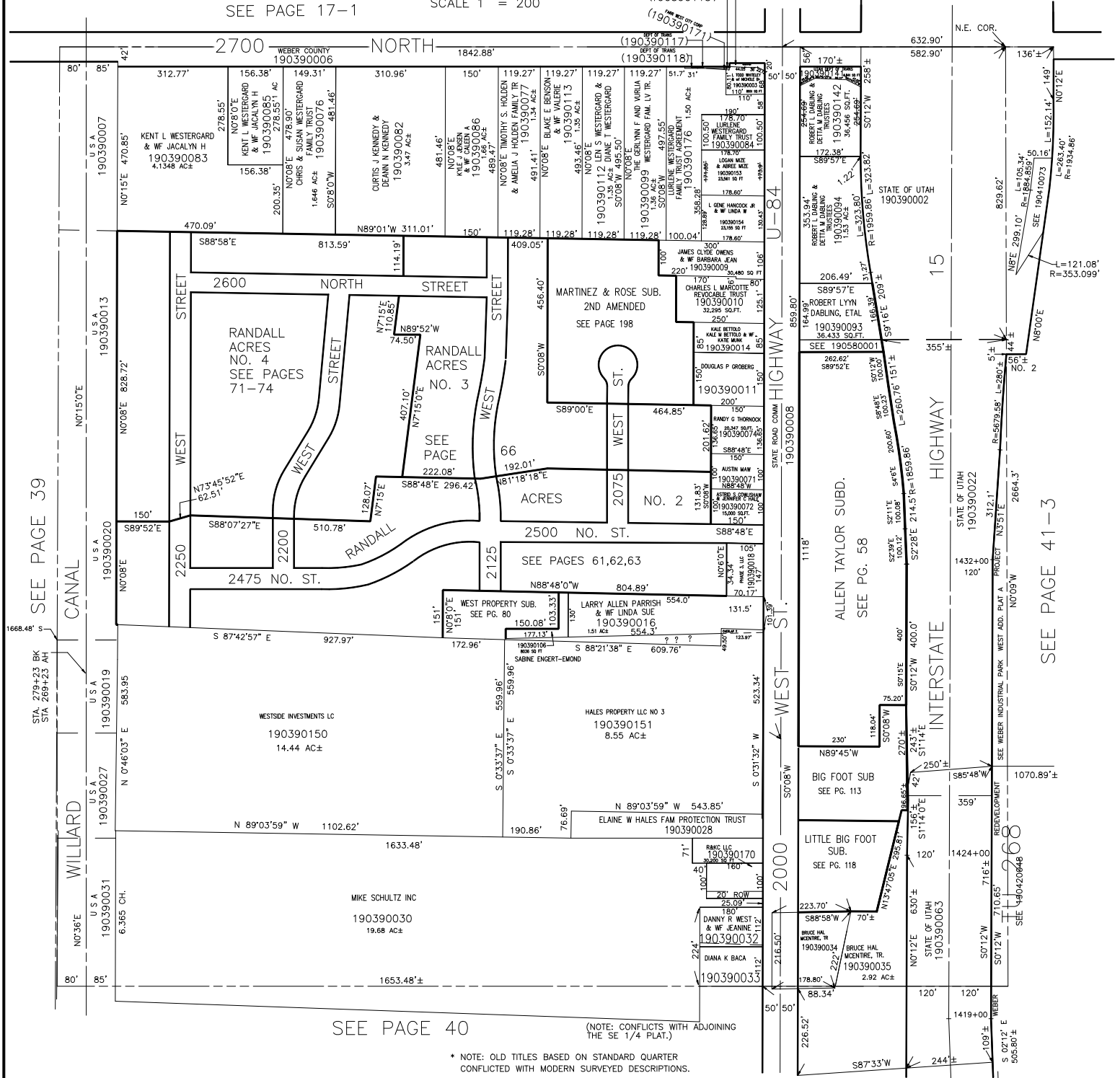
IN FARR WEST CITY

(190390116)

PREFIX : 19-039
ALSO SEE P.39-2

SEE PAGE 17-1

SCALE 1" = 200'



SEE PAGE 40

(NOTE: CONFLICTS WITH ADJOINING THE SE 1/4 PLAT.)

* NOTE: OLD TITLES BASED ON STANDARD QUARTER CONFLICTED WITH MODERN SURVEYED DESCRIPTIONS.

SEE PAGE 39

CANAL

WILLARD

STATE ROAD COMM. HIGHWAY 84

STATE ROAD COMM. HIGHWAY 15

STATE ROAD COMM. HIGHWAY 268

STATE ROAD COMM. HIGHWAY 1118

STATE ROAD COMM. HIGHWAY 230

STATE ROAD COMM. HIGHWAY 223.70

STATE ROAD COMM. HIGHWAY 178.80

STATE ROAD COMM. HIGHWAY 226.52

SEE PAGE 41-3